



## Snailwell Christmas Fayre

St Peter's Church

Saturday 7th December, 2.30pm

*In aid of the Church Restoration Fund  
Produce ~ White Elephant*

*Toys & Games ~ Jewellery ~ Christmas Stall*

*Grand Raffle ~ Refreshments*

*Come along early to get your bargains*

~

*We're still looking for good condition toys, games and puzzles to sell, so if you're trying to make room for the next lot of presents due soon, we would be pleased to take the old ones off your hands. We also need jewellery, Christmas decorations and arrangements, white elephant articles and the promise of baking for the produce stall.*

*Please ring Maureen on 577456*

*if you need anything collecting.*

*Volunteers to help set out the stalls in the morning and/or to help run a stall in the afternoon will be welcomed with open arms. The more the merrier!*



## Church Services at Christmas

St Margaret's Chippenham

*Advent Carol Service Sunday December 1st, 6pm*

*Carol Service with Dressing & Dedication of the Crib  
Tuesday 24th December, 6pm*

*Christmas Day Sung Eucharist, 11am*

St Peter's Snailwell

*Candle-lit Carol Service Sunday 22nd December, 6pm*

*Christmas Day Family Communion, 9.30am*

## New Year's Eve Dance

"Two of a Kind"

*Tuesday December 31st, 8 till late*

*Chippenham Village Hall*

*Tickets £7, to include a buffet supper*

*Bar ~ Buffet ~ Grand Draw*

*(prizes welcome)*

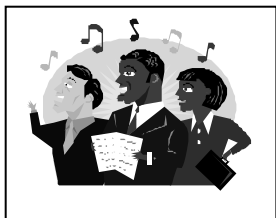
*Please apply to Margie Pammenter (720054),  
Diana Drake (720825) or Dawn Bullock (720092)*

## Santa Claus is coming to Chippenham

*Santa Claus will be arriving in Chippenham on Saturday December 21st, just in time for Christmas. He will ride in his horse-drawn carriage up to the Coach House Stables, arriving from the A11 direction. He should be coming up the High Street at about 12 noon, so do go along and give him a wave.*

## The King's Barbers

**Barbershop group available now for your Christmas function, concert, party or wedding. Please contact Rob on 721549 for all booking information.**



## LA HOGUE

### Farm Shop and Delicatessen

**Now open, just off the A11 near Chippenham**

Christmas goodies from La Hogue include:

- ❖ Freshly harvested Christmas trees from the Elveden Estate
- ❖ Do-it-yourself Christmas hampers
- ❖ Christmas puddings
- ❖ Lots of delicious food and gifts

Opening hours:

Tuesday to Saturday, 10am – 7pm

Sunday 10am – 4pm

**Wanted:** Help with cooking in our Farm Shop kitchen. Please apply to Heather Tilbrook on 01638 751128

## Carol Singing in Chippenham

You are welcome to join in on our annual Carol Singing visit around the village on two evenings before Christmas: **Thursday December 19th** and **Friday December 20th**.

On the Thursday we'll meet at the corner of New Street and visit the North part of the High Street, Scotland End, and Manor Farm Barns. On Friday we'll meet at the corner of Tharp Way and New Street and cover New Street, Tharp Way and the South part of the High Street down to Chippenham Park. Start time is **6.30pm** each night. If you'd like to book us to come to a particular house or sing a favourite carol, please let me know in advance. Proceeds will be split half-and-half between a Christmas charity and our Choir funds.

*Terry Cross, 721549*

## Holiday Accommodation in France

*Near Carcassonne, excellent accommodation in traditional farmhouse between the Med and the Pyrenees. Great facilities, own pool, suitable for lakes, riding, cycling, golf, the coast, local restaurants*

*or just relaxing! Brilliant street markets.*

*Direct flights with Ryanair.*

*Tel: 00 33 468 690 898*

**MULTI METHOD PROFESSIONAL CLEANING AND GUARANTEED GUARDSMAN PROTECTION OF CARPETS, RUGS, UPHOLSTERY, CURTAINS AND LEATHER**

**Safeclean**

*The furnishings care specialists from GUARDSMAN*

- Spot, Stain and Odour removal
- Leather cleaning specialists
- Oriental and Antique rugs cleaned and repaired
- Recommended by leading local furnishing manufacturers and retailers
- Free estimates and advice given. All work insured and guaranteed.
- Established since 1969

Franchisee  
of the Year  
Award  
Winners  
1999

WSA

**FREEPHONE 0808 1440176**

For further information and a free no-obligation survey, please call Freephone 0800 137761.

## Chippenham Football Club

Sorry to report that we are still struggling to find any sort of form so far this season. We also keep picking up fresh injuries. We are trying as hard as possible to turn things around and I am confident that we will do so soon. Your support could help us to do this, so don't forget that our home games are all at Fordham with k.o. at 10.30am on Sundays; all supporters are appreciated.

### Recent Results

Oct 20th Barton Mills (away) Lost 7-3

Scorers Wesley Smith, Steve Dalby, Steve Finneran

Nov 3rd Six Mile Bottom (away) Lost 3-1

Scorer Mike Davies

Nov 10th Cherry Hinton Res (away) Lost 7-2

Scorers Tom Thatcher, Karl Dixon

Nov 17th The Bull (away) Lost 4-0

Nov 24th Robert Sayle (home) Won 4-1

Scorers Tommy Williams, Jon Cocksedge, Luca (2)

### Forthcoming Fixtures

Dec 1st Manor Park Rangers (away)

Dec 8th Eagle Cambs Res (away)

Dec 15th Cup match, (venue tba)

Jan 19th The Alma (home)

Jan 26th Prince of Wales (away)

Feb 2nd Robert Sayle (Cup) (away)

Peter Alexander, Tel: 07729 507196

---

### ***Marie Curie fund-raising***

*For many years now Ginette Hawes has been collecting, sorting and sending stamps to Marie Curie Cancer Care. She's now received a thank-you letter from them, which says: "This is just a short note to thank you for collecting, cutting out and sending us the used stamps. We do appreciate your efforts. The philatelist comes to collect them every 3 months. We get between £60 and £80 from him. For the last lot we got £78 and once we got £108, so you can see just how grateful we are to you. Please keep going and keep collecting!" So you can see it's worth while taking a minute or two to tear off and keep your used stamps for Ginette to send off. You can contact her at 26 East Road, Isleham, Ely, Cambs CB7 5SN.*

---

### **Meggie's Pet Sitting Service**

If you're going out for the day or going on holiday and have pets that need looking after, then please call me on 01638 720062 or pop in @ 9 Tharp Way, Chippenham.



Thank you to everyone who has used my service over the year. I have really enjoyed looking after all of your wonderful pets! Wishing all of my customers and their pets a very Merry Christmas and a Happy New Year!  
*Megan Dumphreys*

---

### **Home insulation grants**

East Cambs District Council and London Electricity have recently launched an excellent home insulation scheme to provide low-cost, affordable cavity wall insulation and loft insulation measures for your home. This will help to reduce your heating bills, improve your comfort and contribute to lowering CO2 emissions caused by inefficient use of fuel. The amount of discount available depends on the type and size of your house and whether it is at present heated by coal, electricity gas or oil.

### Help the Emergency Services with Datalink

Datalink is an initiative supported by Help the Aged, Cambridgeshire Constabulary, Neighbourhood Watch and our local Primary Care Trust. The scheme ensures that the emergency services have access to important information about you should you have an accident or sudden illness at home. The scheme provides you with an information sheet to fill in and a special container to keep it in. You keep the container in the fridge door and stick a special label inside your front door and on the outside of the fridge. This enables the emergency services to find the canister with your personal details when they come in: they are all aware of the scheme and know where to look. Your local Neighbourhood Watch co-ordinator should have Datalink forms and containers soon, or you can ring the Police Community Safety Unit on 01223 823251.

---

### Chippenham Tennis Club

Following our great success in the Norfolk & Suffolk Tennis League, ending up top of division three and moving on to division two next season, we are looking to enter a second team. It would be very nice to get together a mixed team: we have enough men players but need some ladies. Matches are played in the early evenings each week during the summer, so if you feel you could commit to this then we would be pleased to hear from you. Please contact Jon van de Peer, 721783.

#### Wimbledon Tickets

Several members have asked how to enter the annual ballot for Wimbledon tickets. You should send a stamped addressed envelope to the All England Lawn Tennis Club, PO Box 98, Wimbledon, SW19 5AE by December 31st (one application per household). Successful applicants will be notified in February.

*Alan Broadway*



#### M S Harding Interior and Exterior Painting

**For a reliable, honest and professional  
service call Mark on:**

*Mobile 07710 181729, Tel 01353 723140*

*48 Cloverfield Drive, Soham, CB7 5FS*

Professional Fruit Tree Pruning

**IAN PITCAIRN M.I.Hort**

20 years a fruit farm manager

**01440 - 786467**

Restoring Old Fruit Trees a Speciality

Also new fruit & nut gardens designed

Help with choice of varieties

Planting & Training etc.

## Chippenham Women's Institute

We have our Annual Dinner this month so there is no regular meeting. We start again in January, when hopefully we will have the use of the Village Hall. The January meeting is on Wednesday 15th at 7.30pm, when Vernon Place will be coming to talk on "Exposures of a Cameraman", tales from his long career as a photographer. The competition is for the prettiest tree decoration. *GINETTE HAWES, President (781127)*

*Eileen Smalley, Secretary (720453)*

## Village Pump Flower Containers

A chance enquiry from a comparative newcomer to the village has alerted us to the fact that there must now be a number of people in Chippenham who don't know the history of the flower tubs around the village pump.

It must now be six years or more since someone suggested that the focal point of the village could be enhanced by the provision of flowers there. The idea was floated in the Newsletter, received a strong measure of approval and residents contributed generously to a fund with which to launch the enterprise. The robust and stylish timber containers were made by John Noakes, and plastic bins were purchased as liners. We were left with a 'float' out of which we were able to buy plants for the first two summers and hyacinth bulbs to follow on.

Since then various families or individuals have either provided plants or, more often, have given money with which to buy them: a happy state of affairs which enhances the feeling of community involvement and enjoyment. Equally welcome are offers to join the watering rota! At the moment this is shared by 3 households but we could well do with more helpers. Please contact one of the undersigned if you are willing to consider helping. (We take each person's holiday dates and availability into account before finalising the rota.) If you have any comments or suggestions we would be pleased to receive them; as well as of course offers to contribute towards the plants or bulbs.

*Diana Drake (720825), Daphne Hamer (721042)  
and John Steele (720705)*



## **SITUATION VACANT** **Foster Carer**

*It doesn't matter who you are or what you do – if you can offer a child a loving, caring and supportive home, you're qualified for the job!*

*We offer financial allowances to cover the costs of the child and additional payments can be made depending on your skills and experience.*

*Please call Cambridgeshire County Council on 0800 052 0078 for an Information Pack.*

## New Post Office for Fordham

A new Community Post Office is due to open in the Victoria Hall in Fordham on Monday 16th December. The Post Office will be open on Monday and Thursday afternoons and will be run by Mr Roger Dicker who is also the postmaster at Kentford.

## HealthWise

I have that end of term feeling just now as I have completed my presentation of a ten week course on Healthy Living for 2 groups in North Cambridgeshire. We have been adopting a simple daily exercise pattern linked with making healthy choices for each meal and including, where applicable, some complementary therapies. All of this is designed to boost our natural levels of immunity against the invasion of germs and infections with which we are bombarded this time of the year. It is amazing what a difference it can make to our overall health if we just make a few adjustments to our diet and add in enough exercise to keep our bodies functioning at a reasonable level. I would add that these groups had significant physical difficulties which meant that we had to adapt to an exercise routine which was chair based so it is something that everyone can do. In terms of diet it can make all the difference if you simply raise your daily intake of fruit and vegetables to five of each, do so by adding in an extra one each week until you reach this number, rather than trying to do it all at once. Try the new shop at La Hogue Farm in Chippenham for an excellent range of locally grown produce and many other lines too.

If you would like to know more about any of the above, or to book a personal consultation for yourself or to give as a gift for Christmas to a friend or family member, do get in touch with me. I am also offering a special discount of 10% for any Aloe Vera or Neways Products over the value of £20. If you purchase a Bioflow Magnetic Bracelet between now and Christmas you will receive a special gift with it (we are not permitted to offer discounts on the Bioflow products!). If you would like me to include any other health-related topics in these columns please do let me know. For further information please contact Maureen Penney tel: 01638 750475 or email [maureen@jancisharvey.co.uk](mailto:maureen@jancisharvey.co.uk).

## Village Hall 100 Club November Winners

1st Prize: Terry Cross	£20
2nd Prize: John Smyth	£10
3rd Prize: Carole & David Smyth	£5

## NEW YEAR'S RESOLUTION

START PLANNING FOR FINANCIAL INDEPENDENCE



CONTACT



[www.newmarketfinancialplanning.co.uk](http://www.newmarketfinancialplanning.co.uk)

01638 721431

## New curate for Chippenham and Snailwell

We are very pleased to announce that at last a new person has been chosen to come to live in Chippenham and serve in our two churches. Michael Banyard will be ordained as a curate in June next year. His first service here will be on Sunday June 29th. Mike has provided the following details about his career.

“Michael Banyard, currently studying for Ministry at Westcott House in Cambridge, and his wife Helen, are delighted to be moving to Chippenham and Snailwell in July 2003. Michael taught in Ely for fifteen years, before moving to Cyprus in January 1985 to work as Deputy Head at a Services' Secondary School there.

Six years later the family moved to Hong Kong, leaving in 1996 to move to Germany and early retirement in 1997. Michael and Helen, who is a primary school teacher, then returned to Hong Kong where Michael served as Lay Pastoral Assistant in the Anglican Cathedral, coming back to UK in 2001 to commence studies for the ordained ministry at Westcott. Christian, 26, currently works for a British company in Shanghai, and Caroline, 24, is an Officer Cadet at Sandhurst; they are also at home from time to time.

The family is very much looking forward to joining the Ministry Team in the Three Rivers Group, serving with Ann Haselhurst.”

### Snailwell Church News

The church looked fantastic for our Flower Festival on 19th-20th October, with beautiful flowers, some inspirational arrangements, lovely old photographs and an assortment of old implements and tools. David Ball's Harvest Thanksgiving service was great. I hope that everyone who took part and came to share the service enjoyed it. May I add that there is a very special feeling in our church when everyone is in there doing their arrangements. We raised about £350 over the weekend, including the collection taken at the Harvest service. All the monies raised will go towards the electrical rewiring project at present being carried out.

*Maureen Howes, 6 The Street, Tel: 577456*

### Children singing carols

*Chippenham children, please look out for a leaflet which will be coming round soon for you. Isobel Mangell and Robert Cross hope to get together a group of little ones to sing "Away in a Manger" at the Carol Service on Christmas Eve, and the leaflet will let you know when and where the (short) practices will be.*

## St Peter's Church Restoration work

Letter from the Church Treasurer, Michael Wallis

*I would like to take this opportunity on behalf of Snailwell PCC to say how much we greatly appreciate the marvellous support received from the residents of Snailwell and surrounding areas towards the Restoration Fund for the rewiring of the church. The money donated to date totals £3,523.50 against the likely cost of £5,229 plus VAT. Notwithstanding that we have been offered a loan of £1,000, to receive donations of over £3,500 so far has greatly exceeded our expectations. The rewiring is now under way and should be completed by the end of November.*

*Perhaps the best way that I can illustrate how generous and supportive so many have been is to say how much money has been raised and spent over the years in maintaining this valuable and irreplaceable asset.*

*St Peter's Church is central to our inheritance in Snailwell and has a Norman tower. Over the last 10 years funds raised for restoration have totalled £36,852.05 and expenditure has added up to £35,979.74. So you can see the monies raised and costs are closely balanced. We have received several grants and loans but 60% or more of the money has come from individual donations. The PCC is greatly indebted to you for your kindness and generosity. Thank you to everyone.*

*MW*

### Snailwell Sunday Rota

	<u>Readers/sidesmen</u>	<u>Flowers &amp; Cleaning</u>
December 1st	Maureen	Bryan & Betty
December 8th	Gaynor	Gaynor & Sue
December 15th	Betty	"
December 22nd		<i>Flowers everyone</i>
Carol Service 6pm		
December 25th	Michael	Sophie & Jane
December 29th	Muriel	"
January 5th	Maureen	Terry, Maureen, Muriel
January 12th	Gaynor	"
January 19th	Betty	Bryan & Betty
January 26th	Michael	"
February 2nd	Muriel	Gaynor & Sue
If these dates don't suit, please swap or contact me.		
Thank you. Maureen Howes 577456		

### Chippenham Sunday Rota

SUNDAY	Dec 1st 11am	Dec 1st 6pm Advent Carols	Dec 8th	Dec 15th	Dec 22nd	Dec 24th Carol Service	Dec 25th	Dec 29th	Jan 5th	Jan 12th	Jan 19th	Jan 26th
SIDESMEN	Jan Alan		Brian	Ian	Jan	Alan	Brian	Jan	Ian	Alan	Brian	Jan
READERS	Eileen		Anne	James	Brian		Chris	Jan	Eileen	Anne	Brian	James
WINE	Chris	<i>PCC</i>	Brian & Jennifer	Isabel & Terry	Linda	<i>none</i>	<i>none</i>	Alan	Mandy & Ian	Peter & Fiona	Paul & Isobel	Sean & Moir
CLEANING	Judy Eileen & Mary		Julie	Paul & James	Fiona & Mandy		Judy Eileen & Mary	Judy Eileen	Julie	Paul & James	Fiona & Mandy	Judy Eileen & Mary
FLOWERS	Sam		Jennifer		<i>all, Christmas flowers</i>			Nicola		Joyce		

# Parish Council News

## Notice for parents of Chippenham children

Please be aware that there has been a spate of petty vandalism in the village recently. Police have attended incidents and noted that problems appear mainly to be caused by children from outside the village. Will village children or their parents please let the Parish Council know if they see anything or know someone who is responsible for any damage.

## Parish Precepts for 2003

Both Parish Councils have now met and set their precept for next year. This is the money which is given to Parish Councils to spend each year and which comes directly from your Council Tax. Snailwell PC decided to increase their precept from £1,800 this year to £2,000 for next year. This represents about £27.75 per Council Tax payer for the year. In Chippenham the Parish Council agreed to keep the precept at £5,500 for a further year; or £27.08 per taxpayer.



## Recycling can save you money

Chippenham has so far this year benefited to the tune of nearly £300 in recycling credits.

These are given according to the tonnage collected at the newspaper, bottle and can recycling banks behind the Village Hall. The money received helps directly to keep down the precept the Parish Council sets each year. So you can see there is a direct relationship between your waste paper and the amount of Council Tax you have to pay. Keep filling those banks!

## Over 60s Christmas Bonus

This year the bonus has been set at £18 per person, a small decrease from last year's £20. This is because the charity interest which funds the bonus has been smaller this year and we have more applicants: 40 this time.

### Current Planning Applications

*Plans recently received by Chippenham PC:*

- Revised terrace layout, rear of School House, 16 High Street, 00/00590, (amendment) for Mr & Mrs S Newell
- Increase window opening for French doors, Fiennes House, Chippenham Park, 02/01103, for Mrs M Hansford
- Small rear extension, infill of loggia and replacement/new dormers, 41 New Street, 02/01106, Mr & Mrs T Cross
- Erection of 2 signs adjacent to A11, 02/01020, for La Hogue Farm Shop
- Erection of one sign at Low Park Corner, 02/01019, for La Hogue Farm Shop

*Plans recently considered by Snailwell PC:*

- Business units, access arrangements, land off Fordham Road, 02/00995 for Godfrey & Hicks
- Amendment to accommodation wing, British Racing School, 11 Newmarket Road, 00/00832

**THE NEXT MEETING** of **Chippenham** Parish Council is on Wednesday January 8th at 7pm, in the Village Hall. **Snailwell** Parish Council's next meeting will be held in St Peter's Church on Tuesday January 21st at 7.45pm.

## Chippenham Youth Club

The Club has continued with up to 22 members attending some Fridays. This week we have a trip out to go swimming at Bury. We've now had to stop using the Village Hall until

after Christmas while the extension is going up. We'll be starting again on Friday 10th January. John Butler, our Youth Leader, is drawing up full list of activities for the new term.

I'd like to take this opportunity to thank the management at Wildtracks for their very generous donation of vouchers for the Club.

New members or helpers please contact me for information. *Lynn Miller, 40 High Street, Tel: 720755*

## Skateboard plans for the playing field

The Parish Council's plans for a skateboard 'half-pipe' have been approved by the landowner of the playing field off New Street. The plans have been approved by the Royal Society for the Prevention of Accidents, who will also carry out a full safety assessment of the half-pipe once it has been constructed. The area will also be checked on a weekly basis as part of the Council's insurance. We hope that construction will start within a few weeks, so that by early Spring the skateboard facility will be ready for action. *Judy Broadway*

## Chippenham Traffic Calming

*The Parish Council has agreed to install a series of bollards in the pavement at the junction of Scotland End outside the Village Hall, and by the access between nos 40 and 41 High Street in order to stop vehicles mounting the pavement there. There have been a number of near misses recently and we hope the bollards will encourage people to give way.*

*The County Council has also approved a scheme to improve the entrance to the village at Chippenham Lodge corner, by the Bowls Club, to try to stop cars overshooting the corner and ending up in the hedge in Parkside.*

*A recent traffic survey carried out for the Police in August showed that only 3% of vehicles travelling towards the A11 and 2% travelling towards Fordham were driving above the speed limits at a rate that would result in prosecution. The statistics have been compared to a similar survey done in 1998. There has been an increase in traffic volume over that time, but a decrease in the number of people speeding. We hope this is due to the traffic calming measures introduced over the last few years.*

## Snailwell rodent report

Snailwell PC has received numerous reports about rats in residents' gardens and outbuildings. Local rodent control firms have been in attendance. Will residents please note that piles of rubbish and refuse will attract rats. Please don't leave your bin-bags out too early, or leave scraps uncovered which might encourage rats.

# The Parish Churches of Chippenham & Snailwell

## Church Diary

### December

<b>Sun 1st</b>	<b>Advent Sunday</b>
<i>Isaiah 64:1-9 1 Corinthians 1:3-9 Mark 13:24-37</i>	
Holy Communion	Snailwell 9.30am
Sung Eucharist	Chippenham 11am
CANDLELIT ADVENT CAROLS Chippenham 6pm	
<b>Sun 8th</b>	<b>Second Sunday of Advent</b>
<i>Isaiah 40:1-11 2 Peter 3:8-15a Mark 1:1-8</i>	
Matins	Snailwell 9.30am
Sung Eucharist	Chippenham 11am
<b>Sun 15th</b>	<b>Third Sunday of Advent</b>
<i>Isaiah 61:1-4, 8-11 1 Thessalonians John 1:6-8, 19-28 5:16-24</i>	
Holy Communion	Snailwell 9.30am
Sung Eucharist	Chippenham 11am
<b>Sun 22nd</b>	<b>Fourth Sunday of Advent</b>
<i>2 Samuel 7:1-11, 16 Romans 16:25-27 Luke 1:26-38</i>	
CANDLELIT CAROL SERVICE	Snailwell 6pm
Sung Eucharist	Chippenham 11am
<b>Tues 24th</b>	<b>Christmas Eve</b>
CANDLELIT CAROL SERVICE Chippenham 6pm	
<b>Weds 25th</b>	<b>Christmas Day</b>
<i>Isaiah 52:7-10 Hebrews 1:1-4, 5-12 John 1:1-14</i>	
Family Communion	Snailwell 9.30am
Sung Eucharist	Chippenham 11am
<b>Sun 29th</b>	<b>First Sunday after Christmas</b>
<i>Isaiah 61:10 – 62:3 Galatians 4:4-7 Luke 2:15-21</i>	
Holy Communion	Snailwell 9.30am
Matins	Chippenham 11am
<u>January</u>	
<b>Sun 5th</b>	<b>Second Sunday after Christmas</b>
<i>Jeremiah 31:7-14 Ephesians 1:3-14 John 1:10-18</i>	
Holy Communion	Snailwell 9.30am
Sung Eucharist	Chippenham 11am
<b>Sun 12th</b>	<b>The Baptism of Christ (First of Epiphany)</b>
<i>Genesis 1:1-5 Acts 19:1-7 Mark 1:4-11</i>	
Matins	Snailwell 9.30am
Sung Eucharist	Chippenham 11am
<b>Sun 19th</b>	<b>Second Sunday of Epiphany</b>
<i>1 Samuel 3:1-10 Revelation 5:1-10 John 1:43-51</i>	
Holy Communion	Snailwell 9.30am
Sung Eucharist	Chippenham 11am
<b>Sun 26th</b>	<b>Third Sunday of Epiphany</b>
<i>Genesis 14:17-20 Revelation 19:6-10 John 2:1-11</i>	
Matins	Snailwell 9.30am
Matins	Chippenham 11am

### Pastoral Letter from the Vicar of Fordham

The other evening I was reading the Christmas edition of 'Good Housekeeping', a magazine I have read for a number of years. It has, disconcertingly, begun to advertise itself as, 'The Magazine for Grown-Up Women'. Personally, I've never thought of myself as entirely grown-up, nor am I altogether sure that I want to be, but I enjoy looking at the clever things other people manage to do with their houses and over the years I have discovered many a good recipe within its pages, so I keep reading it.

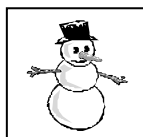
What the Christmas issue, which comes out early in November, tells me, is that this is a magazine for organised women, and this is even more disconcerting, for if I am doubtful about being grown-up, I am quite sure I am not organised. The Christmas cake is not yet made and there is no hope of making my own mincemeat (though I have been known to do so). And will our house be decorated with home-made wreaths and tasteful garlands and artistically grouped candles? I doubt it very much. It's all I can do to find space for the Christmas cards and gaze nostalgically at the tree decorations, many of which our children made in primary school.

But I am straying from the point of my mentioning all this, because these things are in the Christmas issue every year. This year I happened upon something I don't remember seeing before – something which was repeated in several places. In amongst all the advice for getting the turkey defrosted and the mince pies into the oven was a reminder that you might want to make space for attending Church – either at midnight or on Christmas morning, and there was a plaintive letter from a woman who did exactly that last year and was treated rather inhospitably by the vicar, who rather disapproved of people who only come to Church at Christmas.

I was, on the one hand, glad to see that it was taken as read that Christmas has a religious dimension, for this is becoming harder and harder to discover amidst all the hype about the holiday's more secular expression. But I was disturbed by the thought that we might, as a Church, be seen to be unwelcoming of those who rarely come but who find themselves prompted, for whatever reason, to come at this time of year. Why do people come to church at Christmas? Because they like singing carols? Because it's a family tradition? Because they love to hear the Christmas story? Because there are special services for children? Why do you come, if you do? Whatever the reason, whatever you are looking for, I can guarantee you that our Lord will be there and he will not ask why you have come. He will simply welcome you, as he did all those who came to him 2,000 years ago in Palestine. And if he does not judge anyone's motives for coming to him, what possible reason could I have for doing so? What I would much rather do is wish you all a very happy Christmas and hope that in this blessed season God will

grant you not, perhaps, your every whim, but, more importantly, your deepest desire.

With my love and prayers, Revd  
Anne Haselhurst



**Next issue** Please send all notices and news for the next issue to the Editor, Judy Broadway, 50 High Street, Chippenham, Tel: 720619, by January 24th. News stories always welcome. You can e-mail me items at [j.broadway@dial.pipex.com](mailto:j.broadway@dial.pipex.com).

**Merry Christmas  
&  
Happy New Year  
to all our readers**

